

# 6700 SERIES PARTS BOOK



(800) 800-6410 | [railparts@harsco.com](mailto:railparts@harsco.com)  
Order online @ [parts.harscorail.com](http://parts.harscorail.com)

Rev: 09102019





- 5 CAB
- 7 DRIVETRAIN
- 11 ELECTRICAL
- 16 HYDRAULIC
- 21 JACKING
- 27 JUPITER
- 32 PNEUMATIC
- 35 POWER PLANT (ENGINE)
- 36 REBUILD
- 37 SURFACING/LINING
- 45 TAMPING



- 59 MARK SERIES TAMPERS
- 61 JACKSON SERIES TAMPERS
- 62 FITS KERSHAW/KNOX KERSHAW
- 63 FITS NORDCO
- 65 FITS PLASSER
- 67 BALLAST REGULATOR
- 69 HAND TOOLS/ABRASIVE/CONSUMABLES
- 70 OTHER HARSCO MOW

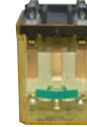




**2006065**  
DOOR LATCH &  
STRIKER



**5021665**  
WOBBLE STICK  
ACT/CONT BLOCKS



**158338-1**  
RELAY W/ DIODE  
24VDC B POS



**2007871**  
BASE BEARING  
MODIFIED



**153140-1018**  
LOCKNUT-GRADE 5,  
.62-18



**251050-1**  
ELECTRO-  
HYDRAULIC  
CONTROLLER



**2014188**  
RH. ADJ. CONSOLE  
ASSEMBLY KIT



**153851-1**  
DEF. FAN



**253769-1**  
JOYSTICK 2-WAY



**2014998**  
MONITOR, 17"  
TOUCH SCREEN



**153894-1**  
WIPER MOTOR, 24V,  
2 SPEED



**254544-1**  
SUN SHADE REAR  
WINDOW



**3423018**  
GAUGE,  
DIAGNOSTIC



**156874**  
RELAY, SOLID STATE,  
DC



**313326-1**  
ELECTRO-HYD.  
CONT.





**2445**  
CHAIN



**2011696**  
BALL PLUNGER, RAIL  
AXEL DRIVE



**155856-1**  
COMPANION  
FLANGE



**220550-1**  
BRAKE SHOE



**4166**  
BUSHING-STEEL 2.00  
ID X 2.209



**2011755**  
FORK SUB-ASSY.



**217959-2**  
TEARDROP PIN -  
1.250 DIA



**222221-1**  
BUSHING-STEEL .53  
ID X 1.124 O



**7880**  
BEARING



**112482-1**  
BRAKE SHOE  
RETAINER



**218160-1**  
SPROCKET  
MACHINED



**223027-1**  
BRAKE CHAMBER  
REWORK



**2003712**  
ALIGNMENT  
COUPLER



**152757-1**  
BEARING PILLOW  
BLOCK 2316 BORE



**218561-1**  
SPROCKET - DRIVE  
ASSY.



**250546-1**  
SPLIT SPROCKET



**2005770**  
DRIVE AXEL  
ASSEMBLY



**153570-1**  
BRAKE SHOE



**220378-1**  
LINK



**250703-1**  
CENTER BONDED  
JOINT



**250890-1**  
MAGNETIC SENSOR



**314076-1**  
SHOE  
HOLDER WELD.RH



**412411-1**  
BRACKET RH DR  
AXLE MTG



**251026-1**  
BRAKE VALVE



**350279-1**  
MAXIBRAKE AIR  
CHAMBER



**412412-1**  
BRACKET LH DR  
AXLE MTG



**312252-1**  
SHOE HOLDER



**350886-1**  
AIR BRAKE  
CHAMBER



**430747-1**  
TRANSMISSION,  
MODIFIED



**313295-1**  
SHAFT, DRIVE  
SPROCKET



**351183-2**  
PNP INDUCTIVE  
PROXIMITY SWITCH



**JS6257**  
SEAL KIT



**313655-1**  
SHOE HOLDER WELD.



**411428-1**  
WHEEL PROFILE  
MACHINED



**231536-1**  
SWITCH ASSY. INCH



**3401340**  
CABLE,M12-M/PIG  
8M 4-COND HF



**3401343**  
CABLE,M12-M/DIN-A  
TRANS 3M JP1



**2014853**  
LIGHT, WORK TRAP  
12/24VDC LED



**3401328**  
CABLE,M12-M/F 7M  
SH 5-COND



**3401339**  
CABLE,M12-M/PIG  
4M 4-COND HF



**180520-2**  
PENDULUM RVDT  
AMPLIFIER



**2005987**  
PWR. PACK ASSY.  
O/S .02VDC



**4022334**  
CABLE,M12-F/PIG 5M  
SH 5-COND



**4022327**  
CABLE, M12 M/F  
NETWORK 3M HF



**154881-1**  
CYLINDER AIR  
2.00B-6.00S-.62



**414272**  
CABLE ASSY. M23M  
PIG 5 M



**2006042**  
LINEAR  
TRANSDUCER



**3401331**  
CABLE,M12-M/PIG  
5M SH 5-COND



**250915-1**  
PUSH BUTTON  
SWITCH



**2011197**  
INSERT, 18 POS.  
MALE



**4022324**  
CABLE, M12 M/F  
NETWORK .75M HF.



**414273**  
CABLE ASSY. M23M  
PIG 10 M.



**253130-1**  
POTENTIOMETER



**2006477**  
NETWORK CABLE  
4.0M



**2006025**  
PUSH BUTTON LOW  
VOLTAGE



**171816-1**  
TACHOMETER MAG  
PICKUP



**230908-1**  
AMPLIFIER MODULE



**5948**  
RELAY, POWER,  
2XNC/NO, 24 VDC



**158325-1**  
BACK-UP ALARM



**2006473**  
NETWORK CABLE  
1.0M



**4022326**  
CABLE, M12 M/F  
NETWORK 2M HF



**2008704**  
FREQUENCY TO  
VOLTAGE CONV.



**3401338**  
CABLE, M12-M/F 8M  
SH 5-COND



**171894-1**  
POTENTIOMTR. ASSY.  
REPLC. KIT



**4022328**  
CABLE, M12 M/F  
NETWORK 4M HF



**5076482**  
METER ASSEMBLY



**2013691**  
ELECTRO  
HYDRAULIC  
CONTROLLER



**158350-1**  
VALVE, 24VDC  
SOLENOID



**3405078**  
CABLE, M12-F/PIG  
7M SH 5-COND



**2004427**  
3/4 WAY SOLENOID  
VALVE



**2006480**  
NETWORK CABLE  
7.0M



**172355-1**  
COIL 24 VDC



**414752**  
POWER  
DISTRIBUTION  
MODULE



**2006828**  
SERVO INTERFACE  
ASSEMBLY



**2010232**  
CONVERSION,  
TRANSDUCER



**2007123**  
BATTERY CHARGER  
24 VDC TO



**2006509**  
SPEED SENSOR



**2013604**  
ELECTRONIC LOAD  
REVERSING RELAY



**2000426**  
CABLE ASSEMBLY



**2015014**  
CABLE ASSY.,  
SENSOR



**H5133WAT**  
SENDER, TEMP.,  
ASSY., 100-3



**351193-1**  
POWER INVERTOR-  
EXELTECH



**2000459**  
SUCTION FILTER -  
SMALL



**2000865**  
FILTER ELEMENT -  
HYD. TANK SUCTION



**2002741**  
HYDRAULIC MOTOR



**2004589**  
FOUR SECTION FLOW  
DRIVER



**2008326**  
HYDRAULIC MOTOR



**2012670**  
HYDRAULIC MOTOR



**2014783**  
CYLINDER- HYD.,  
3.00B-25.00S-2.



**5006590**  
CYL. KIT- HYD. CYL.  
#330838-1



**5015047**  
MULTIFUNCTION  
VALVE



**5033219**  
CYLINDER- HYD.,  
3.00B-28.00S-2.





**115679-1**  
DISC.-DRIVE



**116309-1**  
DRIVER - VIBRATOR



**151100-1**  
ACCUMULATOR



**152783-1**  
ACCUM. CHARGE  
KIT



**155608-1**  
BEARING, BALL-  
SEALED 1.96



**156471-1**  
BEARING SHIELD



**157213-1**  
VALVE-ACCUM.  
DUMP



**157345-1**  
HYDRAULIC MOTOR  
KIT



**171451-1**  
O-RING KIT



**171499-1**  
KIT MOTOR  
REPLACEMENT



**171518-1**  
SHAFT ADAPTER  
SAE



**171612-1**  
ELEMENT



**171862-1**  
BLADDER KIT, GAS 1  
PINT



**172191-1**  
HYD. CYL. KIT



**172195-1**  
HYD. CYLINDER KIT



**172227-1**  
HYD. CYL. KIT



**172324-1**  
COIL



**172375-1**  
ELEMENT



**172460-1**  
RELIEF VALVE



**217256-1**  
MOUNTING PLATE



**240268-1**  
CYLINDER SERV. KIT



**240461-1**  
CYLD. SERVICE KIT



**250975-1**  
ELEMENT, FILTER



**251414-1**  
HYD. MOTOR KEYED  
SHAFT



**251748-1**  
PRESS. SWITCH



**251754-1**  
ELEMENT



**312124-1**  
FLYWHEEL



**312125-1**  
PLATE BEARING  
HYD. VB



**330586-1**  
CYLINDER HYD.  
3.50-6.0



**330835-1**  
CYLINDER- HYD,  
3.50B-2.00S-1.7



**330840-1**  
CYLINDER- HYD,  
3.50B-4.00S-1.7



**340308-1**  
CYLINDER- HYD.  
(SRV 172188-1)



**340311-1**  
CYLINDER  
HYDRAULIC  
3.5X1.75X6



**350193-1**  
PRESSURE FILTER



**350335-1**  
VALVE, 24VDC



**350780-1**  
ACCUMULATOR  
1 PINT



**340308-1**  
CYLINDER- HYD,  
(SRV 172188-1)



**450857-1**  
SYSTEM LOAD  
MANIFOLD



**450858-1**  
FRONT WHEEL DRIVE  
MANIFOLD



**451038-1**  
SOLENOID VALVE



**6691**  
BEARING - CAMROL  
.6246 ID X 2.



**2000770**  
SENSOR-PROX.



**2002438**  
PLATE ADJUSTABLE  
STOP



**2004105**  
SLIDE BAR-RAIL  
HOOK BOX



**2005962**  
RAIL HOOK BOX  
ASSEMBLY



**2005963**  
RAIL HOOK BOX  
WELDED



**2005966**  
BASE WELDMENT  
RAIL HOOK



**2008548**  
PROX SWITCH  
TAPPING PAD



**2009885**  
PROXIMITY SENSOR/  
BRACKET ASSEM.



**2011380**  
STOP BLOCK 90#



**2011381**  
STOP BLOCK 115#



**2011382**  
STOP BLOCK 132#



**2011795**  
CONV-RAIL HOOK  
STOP BLOCK



**2011863**  
PIN, PROX. SEN ON  
JB SLIDE BOX



**2012762**  
RAIL HOOK BOX  
ASSEMBLY



**2012764**  
SLIDE BAR-RAIL  
HOOK BOX



**2012765**  
SLIDE GUIDE  
JACKBEAM



**2012774**  
BRACKET SLIDE BOX  
CYLINDER



**2012911**  
SLIDE GUIDE  
JACKBEAM



**5068542**  
PRESSURE SWITCH  
PROGRAMMABLE



**114046-1**  
END CAP



**158348-1**  
VALVE



**217956-1**  
BEARING WHEEL



**218510-1**  
BUSHING-INSULAT.  
.906 ID X 1.0



**114079-1**  
SPACER - SKEW CYL.



**170217-1**  
SERVICE KIT



**217957-1**  
BEARING AXLE  
RETAINER



**219415-5**  
TEARDROP PIN  
2.000 DIA



**157084-1**  
CYLINDER- AIR,  
2.00B-12.00S-.6



**171271-1**  
SERVICE KIT



**217959-1**  
TEARDROP PIN -  
1.250 DIA



**223228-1**  
FLIPPER WELDED



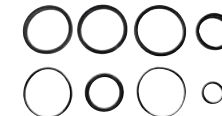
**157862-1**  
AIR VALVE



**171815-1**  
COIL



**218018-2**  
WEAR PAD FRONT



**240316-2**  
SERVICE KIT



**158145-1**  
AIR CYLINDER 1"  
STROKE



**216795-5**  
TEARDROP PIN -  
1.000 DIA



**218019-2**  
WEAR PAD REAR



**253050-1**  
BUSHING-STEEL  
1.002 ID X1.252





**312223-1**  
BRKT.-SLIDE BOX  
CYL.



**313414-1**  
BRACKET SLIDE BOX  
CYLS.



**330568-1**  
CYLINDER- HYD,  
3.50B-2.00S-1.7



**412556-1**  
BASE WELDMENT  
RAIL HOOK



**312232-1**  
LINK WELD. SLIDE  
AXLE



**313878-1**  
PISTON ROD



**330917-1**  
CONVERSION-RAIL  
HOOK



**441017-1**  
CYLINDER-HYD.  
2.50B-16.00S



**312233-1AY**  
WHEEL ASSY. W/  
BEARING



**313880-2**  
HOOK WELDMENT



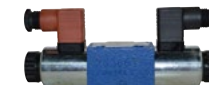
**350227-1**  
SERVO VALVE, FLOW  
CONTROL



**312312-1**  
COVER, FLIPPER .75



**314116-1**  
SLIDE BAR - BOX  
ASSY.



**351070-1**  
DC DBL SOLENOID



**312495-1**  
INSPECT-AXLE  
SLIDING JACKBEAM



**314326-1**  
SLIDE BAR - BOX  
ASSY.



**411198-3**  
RAIL HOOK BOX



**200753**  
CABLE ASSY., M12,  
F/PIG, 10 MET



**2013713**  
CABLE, M12-M/90 F  
1M SH 5-COND



**3401327**  
CABLE, M12-M/F 5M,  
SH 5-COND



**3401342**  
CABLE, M12-M/DIN-A  
TRANS 2M JP1



**414260**  
CONNECTOR M12  
"T"



**2013714**  
CABLE, M12-M/F  
0.5M, SH 5-COND



**3401330**  
CABLE, M12-M/PIG  
3M, SH 5-COND



**4015775**  
CABLE, M12 F/  
PT 10M, BLK, HF,  
5-COND



**2006017**  
SWITCH-TOGGLE  
LOW VOLTAGE



**2014920**  
SPLITTER M12, 5PIN,  
PAR 0.3M



**3401332**  
CABLE, M12-M/PIG  
10M, SH 5-COND



**4016221**  
CABLE, M12-90 F/  
PIG, 4M, SH, 5-COND



**2006471**  
NETWORK CABLE



**3401325**  
CABLE, M12-M/F 2M,  
SH 5-COND



**3401336**  
CABLE, M12-M/F 4M,  
SH 5-COND



**4019452**  
JUPITER 2 DIGITAL  
MODULE



**2011783**  
CABLE, M12-M/  
SPLTR 0.6M, SH 5-C



**3401326**  
CABLE, M12-M/F 3M,  
SH 5-COND



**3401337**  
CABLE, M12-M/F 6M,  
SH 5-COND



**4019453**  
JUPITER 2 ANALOG  
MODULE



**4022325**  
CABLE, M12 M/F  
NETWORK, 1M, HF



**4022350**  
CABLE, M12-M/  
DIN-A, DIODE, 10M,  
1J



**4022368**  
CABLE, M12-M/DIN-I  
DIODE, 1M IJ4 1/4"



**4028626**  
HD TO A, BOARD  
MODULE



**4022329**  
CABLE, M12 M/F  
NETWORK 5M HF



**4022353**  
CABLE, M12-M/DIN-A,  
TRANS, 1M, 1/4



**4022369**  
CABLE, M12-M/DIN-I  
DIODE, 2M, 1/4" IJ4



**4028741**  
JUPITER II HD 32  
MODULE



**4022330**  
CABLE, M12 M/F  
NETWORK, 7M



**4022354**  
CABLE, M12-M/DIN-A  
TRANS IJ4, 2M, 1/4"



**4022370**  
CABLE, M12-M/DIN-I  
DIODE, 3M, 1/4" IJ4



**5015210**  
JAM BOX, G5



**4022332**  
CABLE, M12-F/PIG,  
1M, SH, 5-COND



**4022355**  
CABLE, M12-M/DIN-A  
TRAN IJ4, 3M, 1/4"



**4022695**  
JII, J42, PIC MODULE  
ASSY.



**H2967Y01**  
JUPITER I DIGITAL  
MODULE  
REPLACED BY 5090719



**4022333**  
CABLE, M12-F/PIG,  
3M, SH, 5-COND



**4022356**  
CABLE, M12-M/DIN-A  
TRANS IJ4, 5M, 1/4"



**4022817**  
JUPITER II SCANNER  
BOARD ASSY



**H2967Y02**  
JUPITER 1  
ANALOG INPUT,  
PROGRAMMED  
REPLACED BY 5090720



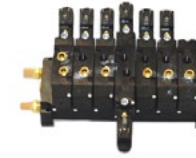
**H2967Y03**  
JUPITER 1  
OUTPUT MODULE,  
PROGRAMMED



**H5134Y04**  
CONNECTOR, MALE  
M12 W/LEADS



**3462**  
VALVE -  
QUICKRELEASE



**2008153**  
7 STATION AIR  
VALVE MANIFOLD A



**H2967Y05**  
JUPITER L-BUS  
MODULE



**H6285X01**  
JUPITER CABLE  
WRENCH



**2000103**  
HORN - AIR



**5059188**  
AIR CYLINDER,  
DOUBLE



**H2967Y06**  
JUPITER DIOCOM  
INPUT



**H6430XAA**  
P42, PCB, ASSY



**2003175**  
AIR DRYER KIT 24V



**151869-1**  
CYLINDER- AIR,  
1.12B-1.00S-.50



**H2967Y07**  
JUPITER DIOCOM  
OUTPUT



**2005769**  
AIR SHIFT  
ASSEMBLY



**154380-1**  
PRESSURE SWITCH



**H5134Y01**  
CONNECTOR, M12,  
5-PIN MAL



**2006667**  
AIR VALVE



**155049-1**  
AIR VALVE





**158346-1**  
AIR VALVE



**350191-1**  
VALVE, SOLENOID



**2000033**  
LIFE-AND-TURN  
LATCH - PAWL. POSI.



**171522-1**  
SEAL KIT - PUMP  
DRIVE



**158347-1**  
VALVE-AIR  
SOLENOID PILOT



**350986-1**  
CYLINDER-AIR,  
0.625S-1.375B BA



**2013873**  
PRESSURE  
TRANSDUCER -  
200 PSI, M12



**171682-1**  
FILTER KIT



**217110-1**  
AIR VALVE



**351015-1**  
VALVE, SOLENOID



**3400894**  
PRESSURE  
TRANSDUCER -  
200 PSI



**171799-1**  
DESSICANT  
CARTRIDGE



**250569-1**  
CYLINDER- AIR,  
12.00S-1.00R-3.



**450333-1**  
AIR RESERVOIR



**154077-1**  
HYD. NEEDLE VALVE



**219870-1**  
LOCKING CAP  
WELDMENT



**251852-1**  
STACK VALVE ASSY.



**171516-1**  
SHAFT



**250771-1**  
PUMP



**251268-1**  
GAUGE-FUEL-1  
1/2NPT X 41 LG



**350944-8**  
CIRCUIT BREAKER  
PUSH-PULL 10A



**350975-1**  
GAS SPRING - 7.00  
STROKE



**B9432Y01**  
BOOSTER PUMP



**2005770X**  
REBUILT DRIVE AXLE  
ASSY.



**411064-1**  
MOTOR CASE -  
CENTER



**2000735**  
6700 WORKHEAD  
EXCHANGE-STD



**2000735EXJ**  
6700 WORKHEAD  
EXCHANGE-JUPITER



**2000825**  
REMANUFACTURED  
STD JACKBEAM



**2001024**  
LIGHT HALOGEN  
WHITE FLOOD 24V



**2001056**  
SURFACING LIGHT  
POSITION METER



**2007722**  
CABLE ASSY.



**2007880**  
CABLE ASSEMBLY



**2008606**  
INSPECT-END CAP-  
TONGUE



**2008693**  
TONGUE-MACHINED



**2008694**  
TONGUE-MACHINED



**2009166**  
ENCODER WHEEL  
ASSEMBLY



**2009565**  
SPACER LEVEL-  
TONGUE WELDMENT



**2011198**  
INSERT, POS.  
FEMALE



**2013005**  
CABLE ASSEMBLY  
23 FT.



**5010825**  
ENCODER, 50PPR,  
M12 CCW



**5011136**  
ACTUATOR ASSY.,  
150MM, 24V



**114530-1**  
INSULATOR WHL.  
BRG.



**150685-6**  
RELAY OUTPUT



**151710-1**  
RECEPTACLE



**151868-1**  
CYLINDER AIR  
1.12B-2.00S-.50



**153483-1**  
CLEVIS - FEMALE



**153669-1**  
PIVOT PIN DIA  
.500 X 2.10



**153941-1**  
LIMIT SWITCH

PHOTO  
UNAVAILABLE

**155081-1**  
CYLINDER- AIR,  
2.50B-12.00S-.6



**2008604-05**  
COMPLETE HINGE -  
TONGUE



**219349-1**  
WEAR PAD



**232061-1**  
CYL. ASSY. SPRING  
RETURN



**155300-1**  
TWIST RECP.



**212061-1**  
SPRING PULL BAR



**223166-1**  
STUB SHAFT



**251932-1**  
LASER BIAS MECH.



**155757-1**  
LAMP



**215382-1**  
SPACER



**223368-1**  
TIE ROD-R RAIL  
FOLLOWER



**251967-1**  
CABLE PLUG - MALE  
11 PINS



**156287-1**  
HEADLIGHT BULB



**218766-1**  
AXLE RAIL  
FOLLOWER



**230683-1**  
CYLINDER ASSY.



**251968-1**  
CABLE PLUG -  
FEMALE 11 SOCKET



**157732-1**  
CABLE CONNECT -  
PLUG, MALE



**219348-1**  
SLIDE BLOCK



**231514-1**  
BEVELED WHEEL  
ASSY.



**253379-1**  
SEALED BEAM  
MNTG. RING





**253648-1**  
SPHER.ROD END  
.75 W/STUD



**253648-2**  
SPHER.ROD END W/  
STUD



**253899-1**  
ARM-LIMIT SWITCH



**253900-1**  
LIMIT SWITCH



**253903-1**  
REAR TOW PIN



**254348-1**  
POT KIT



**312206-1**  
LINING MASK



**314249-1**  
MTG. BRKT. WELD.  
LINING SENSOR



**330588-1**  
ASSY. LIGHT BOX  
LIN. 24VDC



**330740-1**  
CABLE ASSEMBLY



**330746-1**  
ADJ. EXT. ARM  
ASSY.



**330933-1**  
LINING SENSOR  
ASSEMBLY



**330944-1**  
MOTOR & PLATE  
ASSY. - 24VDC



**350239-1**  
SLOPE SENSOR



**350254-1**  
WINCH



**350855-1**  
DIRECT. CONTROL  
VALVE



**351040-1**  
CYLINDER- AIR,  
2.00B-16.00S-0.



**410851-1**  
WHEEL MACHINED



**411895-1**  
WHEEL MACHINING



**412502-1**  
GAUGE WHEEL  
MACHINING



**412503-1**  
FRAME WELD. RAIL  
FOLLOWER



**412505-1**  
SENSOR ARM  
WELDMENT



**412532-1**  
ENCODER WHEEL  
MACHINED



**412564-1**  
WHEEL-MACHINED



**412623-1**  
ARM WELD. LINING  
FOLLOW



**430530-1**  
LOWER MASK ASSY.  
RH



**430530-2**  
LOWER MASK ASSY.  
LH



**430540-1**  
FRONT AXLE  
ASSEMBLY



**431184-1**  
LINEAR ACT. ASSY.



**431405-1**  
CYLINDER- HYD PP,  
2.00B-15.00S



**450820-1**  
CYLINDER- AIR,  
2.00B-21.0



**450822-1**  
CYLINDER- AIR,  
2.00B-12.00S-0.



**2543**  
RUBBER MOUNT



**7591**  
KNOB



**2000359**  
CABLE-12  
CONDUCTOR



**2000430**  
CABLE ASSEMBLY  
4 FT.



**2000476**  
WASHER, FLAT, 1,  
SPECIAL



**2000477**  
WASHER, FLAT, 1,  
SPECIAL



**2001057**  
MASK POSITION  
METER



**2001108**  
FEET-MOUNTING



**2002413**  
SLIDE BAR RAIL  
HOOK BOX



**2002853**  
CUSHION-  
WORKHEAD



**2004111**  
BUSHING-FLG-STL  
1.005 ID/1.38



**2004114**  
EAR WRKHD  
SQUEEZE CYL.



**2004115**  
BRACKET WKHD  
SQUEEZE CYL.



**2004151**  
SHAFT-W.H. PIVOT-  
WELD.



**2004152**  
END PLATE



**2004158**  
WASHER, SPECIAL



**2005171**  
HIGH LOCKNUT, .75-  
16 NYLON INS



**2005521**  
WORKHEAD  
ASSEMBLY



**2005566**  
END PLATE-W.H.  
PIVOT



**2005567**  
PIN WELDMNT-W.H.  
PIVOT



**2005968**  
INDUCTIVE  
PROXIMITY SWITCH



**2005972**  
PLUG, 5-PIN TWIST  
LOCK



**2005973**  
CONNECTOR, 5-PIN  
TWIST LOCK



**2006043**  
LINEAR  
TRANSDUCER  
MAGNET



**2006052**  
LINEAR  
TRANSDUCER -  
16.000 STRO



**2006112**  
FOLLOWER GUIDE  
POST LH



**2006113**  
FOLLOWER GUIDE  
POST RH



**2008112**  
LINEAR ACTUATOR  
ASSY.



**2008767**  
OUTER TUBE



**2009883**  
INDUCTIVE  
PROXIMITY SENSOR



**2009886**  
CORDSET MALE/  
FEMALE



**2010198**  
TRANSDUCER



**2013006**  
CABLE ASSEMBLY  
23 FT.



**2013007**  
CABLE ASSEMBLY  
21 FT.



**2013539**  
WINCH CABLE  
ASSEMBLY



**2014549**  
GUIDE ROD HOLDER  
BOTTOM LH



**2014555**  
GUIDE ROD  
BUSHING



**2014562**  
END PLATE - W.H.  
PIVOT



**2014728**  
PIVOT BUSHING  
COMPOSITE



**2014793**  
CYLINDER- 2.50B X  
1.50R X 3.00





**4012592**  
ANTENNA  
ASSEMBLY



**4016560**  
BOX ASSEMBLY,  
AUTOMAG TIE  
SENSOR



**5008734**  
EAR, SQUEEZE  
CYLINDER



**5013205**  
REMOVAL TOOL  
ASSY., TOOL  
HOLDER



**5015998**  
TOOL HOLDER  
MACHINED



PHOTO  
UNAVAILABLE



**5024146**  
BUSHING, PIVOT PIN



**5024169**  
PIVOT PIN



PHOTO  
UNAVAILABLE



PHOTO  
UNAVAILABLE

**5016042**  
WORKHEAD PIVOT  
ASSY. PD

**5068152**  
INSPECT-FLANGE,  
SHAFT SEAL

**112328-1**  
SPACER



**112980-1**  
KEEPER-TAPPED



PHOTO  
UNAVAILABLE



**112981-1**  
RETAINER-BOLT  
HEAD

**113169-1**  
SNUBBER



**114638-1**  
BEARING



PHOTO  
UNAVAILABLE

**115831-1**  
SLIDE PAD



**116735-1**  
SQ. CTR. BONDED  
JOINT



**117161-1**  
STRIP-INSULATING



**150021-5**  
BEARING



**151781-1**  
CLEVIS BRKT. W/ PIN



**151782-1**  
CLEVIS/PIN



**151862-1**  
BUSHING-STEEL 1.00  
ID X 1.383 O



**153614-1**  
CYLINDER- AIR,  
2.00S-.50R



**172329-1**  
SOLENOID VALVE  
CARTRIDGE



**216795-1**  
TEARDROP PIN-  
1.000 DIA



**152199-1**  
BUSHING-  
RUBBER 1.313 ID X  
2.39



**155396-1**  
BEARING-BALL-  
SEALED 1.18 ID X



**211779-1**  
BAR-MACHINED



**216795-4**  
TEARDROP PIN-  
1.000 DIA



**152374-1**  
BREATHER 1/4 NPT



**155588-1**  
ACOUST  
UPHOLSTERY



**214493-1**  
BUMPER PAD



**216795-7**  
TEARDROP PIN-  
1.000 DIA



**152817-1**  
CHAIN 8'



**157733-1**  
CABLE CONNECT -  
PLUG, FEMALE



**214774-1**  
GUIDE ROD



**216799-2**  
TEARDROP PIN-  
.875 DIA



**153140-1614**  
LOCKNUT- GRADE 5,  
1.00-14



**172188-1**  
HYD. CYL. KIT



**216059-2**  
MOUNTING BRKT  
TAMPING BLADE



**217983-1**  
WASHER-WEAR



**219157-1**  
END PLATE



**230677-1**  
GUIDE ROD BASE W/  
MT.



**250434-1**  
SANDWICH MOUNT



**218045-1**  
BRAKE SHOE



**219568-1**  
KEY FLAT STOCK



**230811-1**  
CIRCUIT BOARD  
ASSY.



**252275-1414**  
LOCKNUT- GRADE  
8, .88-14



**218766-2**  
INSPECT-AXLE - RAIL  
FOLLOWER



**230233-1**  
LIGHT SENSOR  
ASSY. SERVO SYST



**232035-1**  
SPACER PACKAGE



**312021-1**  
HANGER ASSEMBLY



**218767-1**  
SPACER



**230333-1**  
BEARING BLOCK  
ASSY.



**232080-1**  
WKHD SPREAD CYL.  
LOCK TUBE KIT



**313241-1**  
SLIDE GUIDE  
JACKBEAM



**219155-1**  
SHAFT, WKHD.  
PIVOT, WELD.



**230567-2**  
SENSOR ASSEMBLY  
SURF.



**240373-2**  
SHAFT KIT



**313869-1**  
ROD CYLINDER



**330946-1**  
MODIFIED LINEAR  
ACTUATOR



**351142-1**  
VALVE-SINGLE SOLE  
USE C0993Y02



**411191-1**  
10 DIA.WHEEL  
MACH.



**411210-1**  
MANIFOLD -  
WORKLOAD



**412142-1**  
MOTOR BASE  
MACHINED.



**430484-1**  
HYDRAULIC  
VIBRATOR  
ASSEMBLY



**431069-1**  
WKHD PIVOT SERV.  
KIT



**431350-1**  
CYLINDER- HYD,  
2.00B-10.00S-1.



**JK-196101**  
RAIL CLAMP



**JK-215C**  
TAMPING TOOL



**JK-635**  
TAMPING TOOL



**L40550**  
OIL SEAL (VIB)



**MT633**  
CABLE CLIP



**TM14-C**  
PIN





**Rail Products**  
A Harsco Rail Company

## OEM Quality Engineered for Your High Performance MOW Needs



**JK ToughGrit uses only the highest quality of tungsten carbide that is deposited evenly through the weld and penetrates parent material up to 0.12:**

- Extremely hard tungsten carbide grit and proprietary make up wire for longer life (2 to 3X longer than competitor products)
- Mesh sorted tungsten carbide grit evenly distributed in the overlay for superior wear resistance
- Penetration up to .12 inches into parent material for consistent overlay adhesion to the part



**JK SuperCarb uses only the highest grade of carbide in combination with a proprietary brazing process to create superior products that perform above expectations in the harshest rail applications.**

- Formulated mix of tungsten carbide and cobalt is of quality "Die Grade" yielding outstanding impact and wear resistance
- Only virgin tungsten powder contains a crystalline angular grain structure for maximum strength
- Tiles are finished in state-of-the-art sinter Hot Isostatic Press furnaces to virtually eliminate residual porosity
- Proprietary brazing process generates optimum braze strength:
  - Tiles have micro-bumps and ridges to control braze alloy joint thickness for optimum braze shear strength
  - Tiles are nested in machined pockets for increased strength
  - Tri-metal braze alloy is specially devised and engineered for bonding tungsten carbide to steel
  - High temperature brazing process yields the strongest bond possible
  - Layered braze alloys to absorb the different expansion and contraction rates of tungsten carbide and steel





**JK-215L**  
MARK CARBIDE  
TAMPING TOOL  
(LEFT)  
Replacement for:  
Harsco Rail A9602XAH,  
H5532WAB, D2752Y01



**JK-215R**  
MARK CARBIDE  
TAMPING TOOL  
(RIGHT)  
Replacement for:  
Harsco Rail A9602XAG,  
H5532WAA, D2752Y02



**JK-215LN**  
MARK CARBIDE  
TAMPING TOOL  
(LEFT, NARROW)



**JK-215RN**  
MARK CARBIDE  
TAMPING TOOL  
(RIGHT, NARROW)



**JK-H4388WAC**  
MARK CARBIDE  
TAMPING TOOL (LEFT)  
Replacement for:  
Harsco Rail H4388WAC,  
5046431



**JK-H4388WAD**  
MARK CARBIDE  
TAMPING TOOL  
(RIGHT)  
Replacement for:  
Harsco Rail H4388WAD,  
5046428



**JK-197940**  
MARK RAIL CLAMP  
Replacement for:  
Harsco Rail A3033X02



**JK-197940-1**  
MARK RAIL CLAMP  
SINGLE HOOK  
Replacement for:  
Harsco Rail A3033X02



**JK-197940-2**  
MARK RAIL HOOK  
SINGLE  
Replacement for:  
Harsco Rail A3033X02



**JK-B6090Y02**  
MK IV SINGLE  
HOOK RAIL CLAMP  
Replacement for:  
Harsco Rail B6090Y02



**JK-A3033X01**  
MK III SINGLE HOOK  
RAIL CLAMP  
Replacement for:  
Harsco Rail A3033X01



**JK-X68297U**  
MARK SQUEEZE  
CYLINDER  
Replacement for:  
Harsco Rail X68297, X68297U



**JK-193801**  
MARK CARBIDE  
REACTION PAD  
Replacement for:  
Harsco Rail 0-1305738-1-01



**JK-198275**  
MARK CARBIDE BIAS  
PAD ASSEMBLY  
Replacement for:  
Harsco Rail A7660YAA



**JK-301234**  
MARK CARBIDE PAD  
REPLACEMENT KIT  
Replacement for:  
Ballast Tools Inc. BTI-301234



**JK-W750980**  
WHEEL 24"  
Replacement for:  
Harsco Rail W750980



**JK-X766874-01-002**  
WHEEL 30"  
Replacement for:  
Harsco Rail X766874-01-002



**JK-635**  
CARBIDE TAMPING  
TOOL  
(6700 & 3300)  
Replacement for:  
Harsco Rail 412690-1



**JK-196101**  
6700 RAIL HOOK  
Replacement for:  
Harsco Rail 2000784



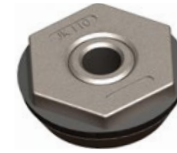
**JK-215C**  
CARBIDE TAMPING  
TOOL (6700 PD WH)  
Replacement for:  
Harsco Rail 5017458



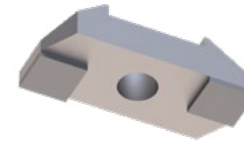
**JK-636L**  
CARBIDE TAMPING  
TOOL (LEFT) (2400)  
Replacement for:  
Harsco Rail 215775-1



**JK-636R**  
CARBIDE TAMPING  
TOOL (RIGHT) (2400)  
Replacement for:  
Harsco Rail 215775-2



**JK-110**  
ADZER BIT  
Replacement for:  
Kershaw 731420 & 580432



**JK-200597**  
ADZER BIT  
Replacement for:  
Kershaw 9301193 &  
580432





**JK-0969**  
**SPIKE ANVIL**  
Replacement for:  
Nordco 10560043



**JK-46650032**  
**SPIKE JAW (LEFT)**  
Replacement for:  
Nordco 46650032



**JK-199120XT**  
**JAW, TIE**  
**EXCHANGER DEEP**  
**BALLAST**  
Replacement for:  
Nordco 46670021



**JK-171041**  
**NIPPER HOOK**  
Replacement for:  
Nordco 44044340



**JK-46650033**  
**SPIKE JAW (RIGHT)**  
Replacement for:  
Nordco 46650033



**JK-10560022**  
**ANCHOR PUSHER**  
Replacement for:  
Nordco 10560022



**JK-54007502**  
**PIN, NIPPER HOOK,**  
**LINK**  
Replacement for:  
Nordco 54007502



**JK-302955**  
**SPIKE PULLER CLAW**  
Replacement for:  
Nordco 46650037



**JK-98410089**  
**KIT, NIPPER HOOK**  
**LINK AND PINS**  
Replacement for:  
Nordco 98410089



**JK-86969201**  
**16\"/>**



**JK-54266875**  
**PIN, NIPPER HOOK,**  
**FLANGED**  
Replacement for:  
Nordco 54266875



**JK-199120**  
**JAW, TIE**  
**EXCHANGER**  
Replacement for:  
Nordco 46670021





**JK-560C**  
**CARBIDE TAMPING TOOL**  
Replacement for:  
Plasser: CU30.7620-FRI, CU30.8820-FRI, CU30.10840-FRI



**JK-560L**  
**CARBIDE TAMPING TOOL**  
Replacement for:  
Plasser: CU30.7620-FRIII; CU30.8820-FRIII; CU30.10840-FRIII



**JK-560LN**  
**CARBIDE TAMPING TOOL**  
Replacement for:  
Plasser: CU30.7620-FRV; CU30.8820-FRV; CU30.10840-FRV



**JK-578-4S-140**  
**CARBIDE TAMPING TOOL**  
Replacement for:  
Plasser: CU30.6220.BE



**JK-575-4S**  
**CARBIDE TAMPING TOOL**  
Replacement for:  
Plasser: CU30.6320.BE



**JK-535N-MXC**  
**CARBIDE TAMPING TOOL**  
Replacement for:  
Plasser CU30.4020-FRI  
Plasser CU30.4520-FRI



**JK-515N-MXR**  
**CARBIDE TAMPING TOOL**  
Replacement for:  
Plasser CU30.4020-FRII  
Plasser CU30.4520-FRII



**JK-515N-MXL**  
**CARBIDE TAMPING TOOL**  
Replacement for:  
Plasser CU30.4020-FRIII  
Plasser CU30.4520-FRIII



**JK-535N-AXC**  
**CARBIDE TAMPING TOOL**  
Replacement for:  
Plasser CU30.4620-FRI  
Plasser CU30.4720-FRI



**JK-515N-AXR**  
**CARBIDE TAMPING TOOL**  
Replacement for:  
Plasser CU30.4620-FRII  
Plasser CU30.4720-FRII

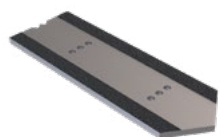


**JK-515N-AXL**  
**CARBIDE TAMPING TOOL**  
Replacement for:  
Plasser CU30.4620-FRII  
Plasser CU30.4720-FRII

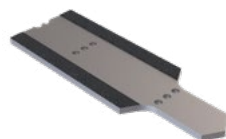




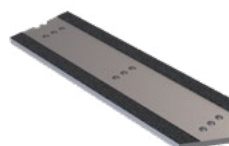
**JK-198845**  
**BROOM CLAMP**  
**ASSEMBLY**  
Replacement for:  
Kershaw 802330



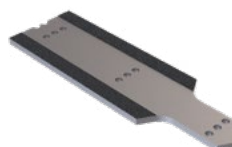
**JK-730MAX**  
**PLOW BLADE, 2 HOLE**  
Fits: Kershaw and Knox  
Kershaw  
OEM part numbers: 194486,  
9015531, 116657, 155153



**JK-730MAXCT**  
**PLOW BLADE, 2 HOLE,**  
**CONCRETE**  
Fits: Kershaw and Knox  
Kershaw  
OEM part numbers: 166656,  
194485



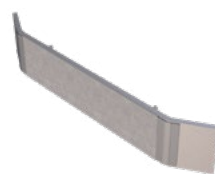
**JK-740MAX**  
**PLOW BLADE, 3 HOLE**  
Fits: Kershaw and Knox  
Kershaw  
OEM part numbers: 194485,  
116656, 9015532, 9001087,  
9011359, 043683037



**JK-740MAXCT**  
**PLOW BLADE, 3 HOLE,**  
**CONCRETE**  
Fits: Kershaw and Knox  
Kershaw OEM part numbers:  
116656, 194485, 9001087



**JK-171031**  
**PLOW BLADE,**  
**5 HOLE**  
Fits: Kershaw and Knox  
Kershaw  
OEM part numbers:  
218508, 147626



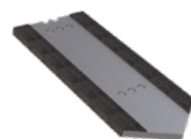
**JK-750-1-7**  
**SKID PLATE,**  
**7-INCH, CARBIDE**  
Fits: Kershaw and Knox  
Kershaw  
OEM part numbers:  
9031952, 176386, 109617



**JK-715**  
**Z BAR, OUTBOARD**  
Fits: Kershaw



**JK-725**  
**Z BAR, INBOARD**  
Fits: Kershaw



**JK-200602**  
**PLOW BLADE,**  
**2 HOLE**  
Fits: Knox Kershaw  
9009018



**JK-200602CT**  
**PLOW BLADE, 2**  
**HOLE**  
**CONCRETE**  
Fits: Knox Kershaw  
9009019



**JK-164415**  
**WHEEL, 16 INCH,**  
**KEYED**  
Fits: Kershaw 164415





**JK-NOR16X.12X1**  
16-INCH CUTOFF  
WHEEL



**JK-NOR14X.12X1**  
14-INCH CUTOFF  
WHEEL



**JK-NOR8X1X.62**  
8-INCH GRINDING  
WHEEL



**JK-NOR8X1X.75**  
8-INCH GRINDING  
WHEEL



**JK-NOR8X1X1**  
8-INCH GRINDING  
WHEEL TYPE 1  
PORTABLE



**JK-NOR8X2X1.38**  
8-INCH GRINDING  
WHEEL TYPE 2  
CYLINDER



**JK-NOR6X3X.62-11**  
6-INCH GRINDING  
WHEEL TYPE 6  
PORTABLE CUP



**JK-765-CB**  
765 CONICAL  
UNDERCUTTER BIT  
Replacement for:  
Harsco Rail 4047390



**JK-642**  
TIE GRIPPER PAD  
Replacement for:  
Harsco Rail 311732-1



**JK-160057**  
WHEEL  
Replacement for:  
Harsco Rail 160057

**CAB**

2006065 DOOR LATCH & STRIKER ..... 5  
 2007871 BASE BEARING MODIFIED ..... 5  
 2014188 RH. ADJ. CONSOLE ASSEMBLY KIT ..... 5  
 2014998 MONITOR, 17" TOUCH SCREEN ..... 5  
 3423018 GAUGE, DIAGNOSTIC ..... 5  
 5021665 WOBBLE STICK ACT/CONT BLOCKS ..... 5  
 153140-1018 LOCKNUT-GRADE 5, .62-18 ..... 5  
 153851-1 DEF FAN ..... 5  
 153894-1 WIPER MOTOR, 24V, 2 SPEED ..... 5  
 156874 RELAY, SOLID STATE, DC ..... 5  
 158338-1 RELAY W/ DIODE 24VDC 8 POS ..... 6  
 251050-1 ELECTRO-HYDRAULIC CONTROLLER ..... 6  
 253769-1 JOYSTICK 2-WAY ..... 6  
 254544-1 SUN SHADE REAR WINDOW ..... 6  
 313326-1 ELECTRO-HYD. CONT. .... 6

**DRIVETRAIN**

2445 CHAIN ..... 7  
 4166 BUSHING-STEEL 2.00 ID X 2.209 ..... 7  
 7880 BEARING ..... 7  
 2003712 ALIGNMENT COUPLER ..... 7  
 2005770 DRIVE AXEL ASSEMBLY ..... 7  
 2011696 BALL PLUNGER, RAIL AXEL DRIVE ..... 7  
 2011755 FORK SUB-ASSY ..... 7  
 112482-1 BRAKE SHOE RETAINER ..... 7  
 152757-1 BEARING PILLOW BLOCK 2316 BORE ..... 7  
 153570-1 BRAKE SHOE ..... 7  
 155856-1 COMPANION FLANGE ..... 8  
 217959-2 TEARDROP PIN - 1.250 DIA ..... 8  
 218160-1 SPROCKET MACHINED ..... 8  
 218561-1 SPROCKET - DRIVE ASSY ..... 8  
 220378-1 LINK ..... 8  
 220550-1 BRAKE SHOE ..... 8  
 222221-1 BUSHING-STEEL .53 ID X 1.124 O ..... 8  
 223027-1 BRAKE CHAMBER REWORK ..... 8  
 250546-1 SPLIT SPROCKET ..... 8  
 250703-1 CENTER BONDED JOINT ..... 8  
 250890-1 MAGNETIC SENSOR ..... 9  
 251026-1 BRAKE VALVE ..... 9  
 312252-1 SHOE HOLDER ..... 9  
 313295-1 SHAFT, DRIVE SPROCKET ..... 9  
 313655-1 SHOE HOLDER WELD ..... 9  
 314076-1 SHOE HOLDER WELD RH ..... 9  
 350279-1 MAXIBRAKE AIR CHAMBER ..... 9  
 350886-1 AIR BRAKE CHAMBER ..... 9  
 351183-2 PNP INDUCTIVE PROXIMITY SWITCH ..... 9  
 411428-1 WHEEL PROFILE MACHINED ..... 9  
 412411-1 BRACKET RH DR AXLE MTG ..... 10  
 412412-1 BRACKET LH DR AXLE MTG ..... 10  
 430747-1 TRANSMISSION, MODIFIED ..... 10  
 JS6257 SEAL KIT ..... 10

**ELECTRICAL**

231536-1 SWITCH ASSY, INCH ..... 11  
 3401328 CABLE, M12-M/F 7M SH 5-COND ..... 11  
 4022334 CABLE, M12-F/PIG 5M SH 5-COND ..... 11  
 2006042 LINEAR TRANSDUCER ..... 11  
 4022324 CABLE, M12 M/F NETWORK .75M HF ..... 11  
 3401340 CABLE, M12-M/PIG 8M 4-COND HF ..... 11  
 3401339 CABLE, M12-M/PIG 4M 4-COND HF ..... 11  
 4022327 CABLE, M12 M/F NETWORK 3M HF ..... 11  
 3401331 CABLE, M12-M/PIG 5M SH 5-COND ..... 11  
 414273 CABLE ASSY, M23M PIG 10 M ..... 11  
 3401343 CABLE, M12-M/DIN-A TRANS 3M JP1 ..... 12  
 180520-2 PENDULUM RVDT AMPLIFIER ..... 12  
 154881-1 CYLINDER AIR 2.00B-6.00S-.62 ..... 12  
 250915-1 PUSH BUTTON SWITCH ..... 12  
 253130-1 POTENTIOMETER ..... 12  
 2014853 LIGHT, WORK TRAP 12/24VDC LED ..... 12  
 2005987 PWR. PACK ASSY, 0/S .02VDC ..... 12  
 414272 CABLE ASSY, M23M PIG 5 M ..... 12  
 2011197 INSERT, 18 POS. MALE ..... 12  
 2006477 NETWORK CABLE 4.0M ..... 12  
 2006025 PUSH BUTTON LOW VOLTAGE ..... 13  
 158325-1 BACK-UP ALARM ..... 13  
 3401338 CABLE, M12-M/F 8M SH 5-COND ..... 13  
 2013691 ELECTRO HYDRAULIC CONTROLLER ..... 13  
 2006480 NETWORK CABLE 7.0M ..... 13  
 171816-1 TACHOMETER MAG PICKUP ..... 13  
 2006473 NETWORK CABLE 1.0M ..... 13  
 171894-1 POTENTIOMTR. ASSY, REPLC. KIT ..... 13  
 158350-1 VALVE, 24VDC SOLENOID ..... 13  
 172355-1 COIL 24 VDC ..... 13  
 230908-1 AMPLIFIER MODULE ..... 14  
 4022326 CABLE, M12 M/F NETWORK 2M HF ..... 14  
 4022328 CABLE, M12 M/F NETWORK 4M HF ..... 14  
 3405078 CABLE, M12-F/PIG 7M SH 5-COND ..... 14  
 414752 POWER DISTRIBUTION MODULE ..... 14  
 5948 RELAY, POWER, 2XNC/NO, 24 VDC ..... 14  
 2008704 FREQUENCY TO VOLTAGE CONV ..... 14  
 5076482 METER ASSEMBLY ..... 14  
 2004427 3/4 WAY SOLENOID VALVE ..... 14  
 2006828 SERVO INTERFACE ASSEMBLY ..... 14  
 2010232 CONVERSION, TRANSDUCER ..... 15  
 2007123 BATTERY CHARGER 24 VDC TO ..... 15  
 2006509 SPEED SENSOR ..... 15  
 2013604 ELECTRONIC LOAD REVERSING RELAY ..... 15  
 2000426 CABLE ASSEMBLY ..... 15  
 2015014 CABLE ASSY, SENSOR ..... 15  
 H5133WAT SENDER, TEMP, ASSY, 100-3 ..... 15  
 351193-1 POWER INVERTOR-EXELTECH ..... 15  
 2000459 SUCTION FILTER - SMALL ..... 16  
 2000865 FILTER ELEMENT - HYD. TANK SUCTION ..... 16  
 2002741 HYDRAULIC MOTOR ..... 16  
 2004589 FOUR SECTION FLOW DRIVER ..... 16  
 2008326 HYDRAULIC MOTOR ..... 16  
 2012670 HYDRAULIC MOTOR ..... 16  
 2014783 CYLINDER-HYD., 3.00B-25.00S-2 ..... 16

5006590 CYL. KIT- HYD. CYL. #330838-1 ..... 16  
 5015047 MULTIFUNCTION VALVE ..... 16  
 5033219 CYLINDER-HYD., 3.00B-28.00S-2 ..... 16

**HYDRAULIC**

115679-1 DISC-DRIVE ..... 17  
 116309-1 DRIVER - VIBRATOR ..... 17  
 151100-1 ACCUMULATOR ..... 17  
 152783-1 ACCUM. CHARGE KIT ..... 17  
 155608-1 BEARING, BALL-SEALED 1.96 ..... 17  
 156471-1 BEARING SHIELD ..... 17  
 157213-1 VALVE-ACCUM. DUMP ..... 17  
 157345-1 HYDRAULIC MOTOR KIT ..... 17  
 171451-1 O-RING KIT ..... 17  
 171499-1 KIT MOTOR REPLACEMENT ..... 17  
 171518-1 SHAFT ADAPTER SAE ..... 18  
 171612-1 ELEMENT ..... 18  
 171862-1 BLADDER KIT, GAS 1 PINT ..... 18  
 172191-1 HYD. CYL. KIT ..... 18  
 172195-1 HYD. CYLINDER KIT ..... 18  
 172227-1 HYD. CYL. KIT ..... 18  
 172324-1 COIL ..... 18  
 172375-1 ELEMENT ..... 18  
 172460-1 RELIEF VALVE ..... 18  
 217256-1 MOUNTING PLATE ..... 18  
 240268-1 CYLINDER SERV. KIT ..... 19  
 240461-1 CYLD. SERVICE KIT ..... 19  
 250975-1 ELEMENT, FILTER ..... 19  
 251414-1 HYD. MOTOR KEYED SHAFT ..... 19  
 251748-1 PRESS. SWITCH ..... 19  
 251754-1 ELEMENT ..... 19  
 312124-1 FLYWHEEL ..... 19  
 312125-1 PLATE BEARING HYD. VB ..... 19  
 330586-1 CYLINDER HYD. 3.50-6.0 ..... 19  
 330835-1 CYLINDER- HYD, 3.50B-2.00S-1.7 ..... 19  
 330840-1 CYLINDER- HYD, 3.50B-4.00S-1.7 ..... 20  
 340308-1 CYLINDER- HYD. (SRV 172188-1) ..... 20  
 340311-1 CYLINDER HYDRAULIC 3.5X1.75X6 ..... 20  
 350193-1 PRESSURE FILTER ..... 20  
 350335-1 VALVE, 24VDC ..... 20  
 350780-1 ACCUMULATOR 1 PINT ..... 20  
 431349-1 CYLINDER- HYD, 2.50B-25.00S-1 ..... 20  
 450857-1 SYSTEM LOAD MANIFOLD ..... 20  
 450858-1 FRONT WHEEL DRIVE MANIFOLD ..... 20  
 451038-1 SOLENOID VALVE ..... 20

**JACKING**

6691 BEARING - CAMROL .6246 ID X 2 ..... 21  
 2000770 SENSOR-PROX ..... 21  
 2002438 PLATE ADJUSTABLE STOP ..... 21  
 2004105 SLIDE BAR-RAIL HOOK BOX ..... 21  
 2005962 RAIL HOOK BOX ASSEMBLY ..... 21  
 2005963 RAIL HOOK BOX WELDED ..... 21  
 2005966 BASE WELDMENT RAIL HOOK ..... 21

2008548 PROX SWITCH TAPPING PAD ..... 21  
 2009885 PROXIMITY SENSOR/BACKET ASSEM. .... 21  
 2011380 STOP BLOCK 90# ..... 21  
 2011381 STOP BLOCK 115# ..... 22  
 2011382 STOP BLOCK 132# ..... 22  
 2011795 CONV-RAIL HOOK STOP BLOCK ..... 22  
 2011863 PIN, PROX. SEN ON JB SLIDE BOX ..... 22  
 2012762 RAIL HOOK BOX ASSEMBLY ..... 22  
 2012764 SLIDE BAR-RAIL HOOK BOX ..... 22  
 2012765 SLIDE GUIDE JACKBEAM ..... 22  
 2012774 BRACKET SLIDE BOX CYLINDER ..... 22  
 2012911 SLIDE GUIDE JACKBEAM ..... 22  
 5068542 PRESSURE SWITCH PROGRAMMABLE ..... 22  
 114046-1 END CAP ..... 23  
 114079-1 SPACER - SKEW CYL ..... 23  
 157084-1 CYLINDER- AIR, 2.00B-12.00S-.6 ..... 23  
 157862-1 AIR VALVE ..... 23  
 158145-1 AIR CYLINDER 1" STROKE ..... 23  
 158348-1 VALVE ..... 23  
 170217-1 SERVICE KIT ..... 23  
 171271-1 SERVICE KIT ..... 23  
 171815-1 COIL ..... 23  
 216795-5 TEARDROP PIN - 1.000 DIA ..... 23  
 217956-1 BEARING WHEEL ..... 24  
 217957-1 BEARING AXLE RETAINER ..... 24  
 217959-1 TEARDROP PIN - 1.250 DIA ..... 24  
 218018-2 WEAR PAD FRONT ..... 24  
 218019-2 WEAR PAD REAR ..... 24  
 218510-1 BUSHING-INSULAT. .906 ID X 1.0 ..... 24  
 219415-5 TEARDROP PIN 2.000 DIA ..... 24  
 223228-1 FLIPPER WELDED ..... 24  
 240316-2 SERVICE KIT ..... 24  
 253050-1 BUSHING-STEEL 1.002 ID X1.252 ..... 24  
 312223-1 BRKT-SLIDE BOX CYL ..... 25  
 312232-1 LINK WELD, SLIDE AXLE ..... 25  
 312233-1AY WHEEL ASSY, W/ BEARING ..... 25  
 312312-1 COVER, FLIPPER .75 ..... 25  
 312495-1 INSPECT-AXLE SLIDING JACKBEAM ..... 25  
 313414-1 BRACKET SLIDE BOX CYLS ..... 25  
 313878-1 PISTON ROD ..... 25  
 313880-2 HOOK WELDMENT ..... 25  
 314116-1 SLIDE BAR - BOX ASSY ..... 25  
 314326-1 SLIDE BAR - BOX ASSY ..... 25  
 330568-1 CYLINDER- HYD, 3.50B-2.00S-1.7 ..... 26  
 330917-1 CONVERSION-RAIL HOOK ..... 26  
 350227-1 SERVO VALVE, FLOW CONTROL ..... 26  
 351070-1 DC DBL SOLENOID ..... 26  
 411198-3 RAIL HOOK BOX ..... 26  
 412556-1 BASE WELDMENT RAIL HOOK ..... 26  
 441017-1 CYLINDER-HYD, 2.50B-16.00S ..... 26

**JUPITER**

200753 CABLE ASSY, M12, F/PIG, 10 MET ..... 27  
 414260 CONNECTOR M12 "T" ..... 27  
 2006017 SWITCH-TOGGLE LOW VOLTAGE ..... 27

2006471 NETWORK CABLE.....	27
2011783 CABLE, M12-M/SPLTR 0.6M, SH 5-C.....	27
2013713 CABLE, M12-M/90 F 1M SH 5-COND.....	27
2013714 CABLE, M12-M/F 0.5M, SH 5-COND.....	27
2014920 SPLITTER M12, 5PIN, PAR 0.3M.....	27
3401325 CABLE, M12-M/F 2M, SH 5-COND.....	27
3401326 CABLE, M12-M/F 3M, SH 5-COND.....	27
3401327 CABLE, M12-M/F 5M, SH 5-COND.....	28
3401330 CABLE, M12-M/PIG 3M, SH 5-COND.....	28
3401332 CABLE, M12-M/PIG 10M, SH 5-COND.....	28
3401336 CABLE, M12-M/F 4M, SH 5-COND.....	28
3401337 CABLE, M12-M/F 6M, SH 5-COND.....	28
3401342 CABLE, M12-M/DIN-A TRANS 2M JP1.....	28
4015775 CABLE, M12 F/PT 10M, BLK, HF, 5-COND.....	28
4016221 CABLE, M12-90 F/PIG, 4M, SH, 5-COND.....	28
4019452 JUPITER 2 DIGITAL MODULE.....	28
4019453 JUPITER 2 ANALOG MODULE.....	28
4022325 CABLE, M12 M/F NETWORK, 1M, HF.....	29
4022329 CABLE, M12 M/F NETWORK 5M HF.....	29
4022330 CABLE, M12 M/F NETWORK, 7M.....	29
4022332 CABLE, M12-F/PIG, 1M, SH, 5-COND.....	29
4022333 CABLE, M12-F/PIG, 3M, SH, 5-COND.....	29
4022350 CABLE, M12-M/DIN-A, DIODE, 10M, 1J.....	29
4022353 CABLE, M12-M/DIN-A, TRANS, 1M, 1/4.....	29
4022354 CABLE, M12-M/DIN-A TRANS IJ4, 2M, 1/4".....	29
4022355 CABLE, M12-M/DIN-A TRANS IJ4, 3M, 1/4".....	29
4022356 CABLE, M12-M/DIN-A TRANS IJ4, 5M, 1/4".....	29
4022368 CABLE, M12-M/DIN-I DIODE, 1M IJ4 1/4".....	30
4022369 CABLE, M12-M/DIN-I DIODE, 2M, 1/4" IJ4.....	30
4022370 CABLE, M12-M/DIN-I DIODE, 3M, 1/4" IJ4.....	30
4022695 JII, J42, PIC MODULE ASSY.....	30
4022817 JUPITER II SCANNER BOARD ASSY.....	30
4028626 HD TO A, BOARD MODULE.....	30
4028741 JUPITER II HD 32 MODULE.....	30
5015210 JAM BOX, G5.....	30
H2967Y01 JUPITER I DIGITAL MODULE.....	30
H2967Y02 JUPITER 1 ANALOG INPUT, PROGRAMMED.....	30
H2967Y03 JUPITER 1 OUTPUT MODULE, PROGRAMMED.....	31
H2967Y05 JUPITER L-BUS MODULE.....	31
H2967Y06 JUPITER DIOCOM INPUT.....	31
H2967Y07 JUPITER DIOCOM OUTPUT.....	31
H5134Y01 CONNECTOR, M12, 5-PIN MAL.....	31
H5134Y04 CONNECTOR, MALE M12 W/LEADS.....	31
H6285X01 JUPITER CABLE WRENCH.....	31
H6430XAA P42, PCB, ASSY.....	31
3462 VALVE - QUICKRELEASE.....	32
2000103 HORN - AIR.....	32
2003175 AIR DRYER KIT 24V.....	32
2005769 AIR SHIFT ASSEMBLY.....	32
2006667 AIR VALVE.....	32
2008153 7 STATION AIR VALVE MANIFOLD A.....	32
5059188 AIR CYLINDER, DOUBLE.....	32
151869-1 CYLINDER- AIR, 1.12B-1.00S-50.....	32
154380-1 PRESSURE SWITCH.....	32
155049-1 AIR VALVE.....	32

**PNEUMATIC**

158346-1 AIR VALVE.....	33
158347-1 VALVE-AIR SOLENOID PILOT.....	33
217110-1 AIR VALVE.....	33
250569-1 CYLINDER- AIR, 12.00S-1.00R-3.....	33
251852-1 STACK VALVE ASSY.....	33
350191-1 VALVE, SOLENOID.....	33
350986-1 CYLINDER-AIR, 0.625S-1.375B BA.....	33
351015-1 VALVE, SOLENOID.....	33
450333-1 AIR RESERVOIR.....	33
2000033 LIFE-AND-TURN LATCH - PAWL, POSI.....	34
2013873 PRESSURE TRANSDUCER - 200 PSI, M12.....	34
3400894 PRESSURE TRANSDUCER - 200 PSI.....	34
154077-1 HYD. NEEDLE VALVE.....	34
171516-1 SHAFT.....	34
171522-1 SEAL KIT - PUMP DRIVE.....	34
171682-1 FILTER KIT.....	34
171799-1 DESSICANT CARTRIDGE.....	34
219870-1 LOCKING CAP WELDMENT.....	34
250771-1 PUMP.....	34

**POWER PLANT (ENGINE)**

251268-1 GAUGE-FUEL-1 1/2NPT X 41 LG.....	35
350944-8 CIRCUIT BREAKER PUSH-PULL 10A.....	35
350975-1 GAS SPRING - 7.00 STROKE.....	35
B9432Y01 BOOSTER PUMP.....	35

**REBUILD**

2005770X REBUILD DRIVE AXLE ASSY.....	36
411064-1 MOTOR CASE - CENTER.....	36
2000735 6700 WORKHEAD EXCHANGE-STD.....	36
2000735EXJ 6700 WORKHEAD EXCHANGE-JUPITER.....	36
2000825 REMANUFACTURED STD JACKBEAM.....	36

**SURFACING/LINING**

2001024 LIGHT HALOGEN WHITE FLOOD 24V.....	37
2001056 SURFACING LIGHT POSITION METER.....	37
2007722 CABLE ASSY.....	37
2007880 CABLE ASSEMBLY.....	37
2008606 INSPECT-END CAP-TONGUE.....	37
2008693 TONGUE-MACHINED.....	37
2008694 TONGUE-MACHINED.....	37
2009166 ENCODER WHEEL ASSEMBLY.....	37
2009565 SPACER LEVEL-TONGUE WELDMENT.....	37
2011198 INSERT, POS. FEMALE.....	37
2013005 CABLE ASSEMBLY 23 FT.....	38
5010825 ENCODER, 50PPR, M12 CCW.....	38
5011136 ACTUATOR ASSY, 150MM, 24V.....	38
114530-1 INSULATOR WHL. BRG.....	38
150685-6 RELAY OUTPUT.....	38
151710-1 RECEPTACLE.....	38
151868-1 CYLINDER AIR 1.12B-2.00S-50.....	38

153483-1 CLEVIS - FEMALE.....	38
153669-1 PIVOT PIN DIA.500 X 2.10.....	38
153941-1 LIMIT SWITCH.....	38
155081-1 CYLINDER- AIR, 2.50B-12.00S-.6.....	39
155300-1 TWIST RECP.....	39
155757-1 LAMP.....	39
156287-1 HEADLIGHT BULB.....	39
157732-1 CABLE CONNECT - PLUG, MALE.....	39
2008604-0 COMPLETE HINGE - TONGUE.....	39
212061-1 SPRING PULL BAR.....	39
215382-1 SPACER.....	39
218766-1 AXLE RAIL FOLLOWER.....	39
219348-1 SLIDE BLOCK.....	39
219349-1 WEAR PAD.....	40
223166-1 STUB SHAFT.....	40
223368-1 TIE ROD-R RAIL FOLLOWER.....	40
230683-1 CYLINDER ASSY.....	40
231514-1 BEVELED WHEEL ASSY.....	40
232061-1 CYL. ASSY. SPRING RETURN.....	40
251932-1 LASER BIAS MECH.....	40
251967-1 CABLE PLUG - MALE 11 PINS.....	40
251968-1 CABLE PLUG - FEMALE 11 SOCKET.....	40
253379-1 SEALED BEAM MNTG. RING.....	40
253648-1 SPHER. ROD END. 75 W/STUD.....	41
253648-2 SPHER. ROD END W/STUD.....	41
253899-1 ARM-LIMIT SWITCH.....	41
253900-1 LIMIT SWITCH.....	41
253903-1 REAR TOW PIN.....	41
254348-1 POT KIT.....	41
312206-1 LINING MASK.....	41
314249-1 MTG. BRKT. WELD. LINING SENSOR.....	41
330588-1 ASSY. LIGHT BOX LIN. 24VDC.....	41
330740-1 CABLE ASSEMBLY.....	41
330746-1 ADJ. EXT. ARM ASSY.....	42
330933-1 LINING SENSOR ASSEMBLY.....	42
330944-1 MOTOR & PLATE ASSY. - 24VDC.....	42
350239-1 SLOPE SENSOR.....	42
350254-1 WINCH.....	42
350855-1 DIRECT. CONTROL VALVE.....	42
351040-1 CYLINDER- AIR, 2.00B-16.00S-0.....	42
410851-1 WHEEL MACHINED.....	42
411895-1 WHEEL MACHINING.....	42
412502-1 GAUGE WHEEL MACHINING.....	42
412503-1 FRAME WELD. RAIL FOLLOWER.....	43
412505-1 SENSOR ARM WELDMENT.....	43
412532-1E NCODER WHEEL MACHINED.....	43
412564-1 WHEEL-MACHINED.....	43
412623-1 ARM WELD. LINING FOLLOW.....	43
430530-1 LOWER MASK ASSY. RH.....	43
430530-2 LOWER MASK ASSY. LH.....	43
430540-1 FRONT AXLE ASSEMBLY.....	43
431184-1 LINEAR ACT. ASSY.....	43
431405-1 CYLINDER- HYD PP, 2.00B-15.00S.....	43
450820-1 CYLINDER- AIR, 2.00B-21.0.....	44
450822-1 CYLINDER- AIR, 2.00B-12.00S-0.....	44

**TAMPING**

2543 RUBBER MOUNT.....	45
7591 KNOB.....	45
2008359 CABLE-12 CONDUCTOR.....	45
2000430 CABLE ASSEMBLY 4 FT.....	45
2000476 WASHER, FLAT, 1, SPECIAL.....	45
2000477 WASHER, FLAT, 1, SPECIAL.....	45
2001057 MASK POSITION METER.....	45
2001108 FEET-MOUNTING.....	45
2002413 SLIDE BAR RAIL HOOK BOX.....	45
2002853 CUSHION-WORKHEAD.....	45
2004111 BUSHING-FLG-STL 1.005 ID/1.38.....	46
2004114 EAR WRKHD SQUEEZE CYL.....	46
2004115 BRACKET WKHD SQUEEZE CYL.....	46
2004151 SHAFT-W.H. PIVOT-WELD.....	46
2004152 END PLATE.....	46
2004158 WASHER, SPECIAL.....	46
2005171 HIGH LOCKNUT, .75-16 NYLON INS.....	46
2005521 WORKHEAD ASSEMBLY.....	46
2005566 END PLATE-W.H. PIVOT.....	46
2005567 PIN WELDMENT-W.H. PIVOT.....	46
2005968 INDUCTIVE PROXIMITY SWITCH.....	47
2005972 PLUG, 5-PIN TWIST LOCK.....	47
2005973 CONNECTOR, 5-PIN TWIST LOCK.....	47
2006043 LINEAR TRANSDUCER MAGNET.....	47
2006052 LINEAR TRANSDUCER - 16.000 STRO.....	47
2006112 FOLLOWER GUIDE POST LH.....	47
2006113 FOLLOWER GUIDE POST RH.....	47
2008112 LINEAR ACTUATOR ASSY.....	47
2008767 OUTER TUBE.....	47
2009883 INDUCTIVE PROXIMITY SENSOR.....	47
2009886 CORDSET MALE/FEMALE.....	48
2010198 TRANSDUCER.....	48
2013006 CABLE ASSEMBLY 23 FT.....	48
2013007 CABLE ASSEMBLY 21 FT.....	48
2013539 WINCH CABLE ASSEMBLY.....	48
2014549 GUIDE ROD HOLDER BOTTOM LH.....	48
2014555 GUIDE ROD BUSHING.....	48
2014562 END PLATE - W.H. PIVOT.....	48
2014728 PIVOT BUSHING COMPOSITE.....	48
2014793 CYLINDER- 2.50B X 1.50R X 3.00.....	48
4012592 ANTENNA ASSEMBLY.....	49
4016560 BOX ASSEMBLY, AUTOMAG TIE SENSOR.....	49
5008734 EAR, SQUEEZE CYLINDER.....	49
5013205 REMOVAL TOOL ASSY, TOOL HOLDER.....	49
5015998 TOOL HOLDER MACHINED.....	49
5016042 WORKHEAD PIVOT ASSY. PD.....	49
5024146 BUSHING, PIVOT PIN.....	49
5024169 PIVOT PIN.....	49
5068152 INSPECT-FLANGE, SHAFT SEAL.....	49
112328-1 SPACER.....	49
112980-1 KEEPER-TAPPED.....	50
112981-1 RETAINER-BOLT HEAD.....	50
113169-1 SNUBBER.....	50
114638-1 BEARING.....	50
115831-1 SLIDE PAD.....	50

116735-1 SO. CTR. BONDED JOINT.....	50
117161-1 STRIP-INSULATING.....	50
150021-5 BEARING.....	50
151781-1 CLEVIS BRKT.W/ PIN.....	50
151782-1 CLEVIS/PIN.....	50
151862-1 BUSHING-STEEL 1.00 ID X 1.383 O.....	51
152199-1 BUSHING-RUBBER 1.313 ID X 2.39.....	51
152374-1 BREATHER 1/4 NPT.....	51
152817-1 CHAIN 8'.....	51
153140-1614 LOCKNUT- GRADE 5, 1.00-14.....	51
153614-1 CYLINDER- AIR, 2.00S-.50R.....	51
155396-1 BEARING-BALL-SEALED 1.18 ID X.....	51
155588-1 ACOUST UPHOLSTERY.....	51
157733-1 CABLE CONNECT - PLUG, FEMALE.....	51
172188-1 HYD. CYL. KIT.....	51
172329-1 SOLENOID VALVE CARTRIDGE.....	52
211779-1 BAR-MACHINED.....	52
214493-1 BUMPER PAD.....	52
214774-1 GUIDE ROD.....	52
216059-2 MOUNTING BRKT TAMPING BLADE.....	52
216795-1 TEARDROP PIN- 1.000 DIA.....	52
216795-4 TEARDROP PIN- 1.000 DIA.....	52
216795-7 TEARDROP PIN- 1.000 DIA.....	52
216799-2 TEARDROP PIN-.875 DIA.....	52
217983-1 WASHER-WEAR.....	53
218045-1 BRAKE SHOE.....	53
218766-2 INSPECT-AXLE - RAIL FOLLOWER.....	53
218767-1 SPACER.....	53
219155-1 SHAFT, WKHD, PIVOT, WELD.....	53
219157-1 END PLATE.....	53
219568-1 KEY FLAT STOCK.....	53
230233-1 LIGHT SENSOR ASSY, SERVO SYST.....	53
230333-1 BEARING BLOCK ASSY.....	53
230567-2 SENSOR ASSEMBLY SURE.....	53
230677-1 GUIDE ROD BASE W/ MT.....	54
230811-1 CIRCUIT BOARD ASSY.....	54
232035-1 SPACER PACKAGE.....	54
232080-1 WKHD SPREAD CYL. LOCK TUBE KIT.....	54
240373-2 SHAFT KIT.....	54
250434-1 SANDWICH MOUNT.....	54
252275-1414 LOCKNUT- GRADE 8, .88-14.....	54
312021-1 HANGER ASSEMBLY.....	54
313241-1 SLIDE GUIDE JACKBEAM.....	54
313869-1 ROD CYLINDER.....	54
330946-1 MODIFIED LINEAR ACTUATOR.....	55
351142-1 VALVE-SINGLE SOLE USE C0993Y02.....	55
411191-1 10 DIA. WHEEL MACH.....	55
411210-1 MANIFOLD - WORKLOAD.....	55
412142-1 MOTOR BASE MACHINED.....	55
430484-1 HYDRAULIC VIBRATOR ASSEMBLY.....	55
431069-1 WKHD PIVOT SERV. KIT.....	55
431350-1 CYLINDER- HYD, 2.00B-10.00S-1.....	55
JK-196101 RAIL CLAMP.....	55
JK-215C TAMPING TOOL.....	55
JK-635 TAMPING TOOL.....	56
L40550 OIL SEAL (VIB).....	56

MT633 CABLE CLIP.....	56
TM14-C PIN.....	56

**MARK SERIES TAMPERS**

JK-215L MARK CARBIDE TAMPING TOOL (LEFT).....	59
JK-215R MARK CARBIDE TAMPING TOOL (RIGHT).....	59
JK-215LN MARK CARBIDE TAMPING TOOL (LEFT, NARROW).....	59
JK-215RN MARK CARBIDE TAMPING TOOL (RIGHT, NARROW).....	59
JK-H4388WAC MARK CARBIDE TAMPING TOOL (LEFT).....	59
JK-H4388WAD MARK CARBIDE TAMPING TOOL (RIGHT).....	59
JK-197940 MARK RAIL CLAMP.....	59
JK-197940-1 MARK RAIL CLAMP SINGLE HOOK.....	59
JK-197940-2 MARK RAIL HOOK SINGLE.....	59
JK-B6090Y02 MK IV SINGLE HOOK RAIL CLAMP.....	59
JK-A3033X01 MK III SINGLE HOOK RAIL CLAMP.....	60
JK-X68297U MARK SQUEEZE CYLINDER.....	60
JK-193801 MARK CARBIDE REACTION PAD.....	60
JK-198275 MARK CARBIDE BIAS PAD ASSEMBLY.....	60
JK-301234 MARK CARBIDE PAD REPLACEMENT KIT.....	60
JK-W750980 WHEEL 24".....	60
JK-X766874-01-002 WHEEL 30".....	60

**JACKSON SERIES TAMPERS**

JK-635 CARBIDE TAMPING TOOL (6700 & 3300).....	61
JK-196101 6700 RAIL HOOK.....	61
JK-215C CARBIDE TAMPING TOOL (6700 PD WH).....	61
JK-636L CARBIDE TAMPING TOOL (LEFT) (2400).....	61
JK-636R CARBIDE TAMPING TOOL (RIGHT) (2400).....	61

**FITS KERSHAW/KNOX KERSHAW**

JK-110 ADZER BIT.....	62
JK-20057 ADZER BIT.....	62

**FITS NORDCO**

JK-0969 SPIKE ANVIL.....	63
JK-171041 NIPPER HOOK.....	63
JK-54007502 PIN, NIPPER HOOK, LINK.....	63
JK-98410089 KIT, NIPPER HOOK LINK AND PINS.....	63
JK-54266875 PIN, NIPPER HOOK, FLANGED.....	63
JK-46650032 SPIKE JAW (LEFT).....	63
JK-46650033 SPIKE JAW (RIGHT).....	63
JK-302955 SPIKE PULLER CLAW.....	63
JK-86969201 16" WHEEL.....	63
JK-199120 JAW, TIE EXCHANGER.....	63
JK-199120XT JAW, TIE EXCHANGER DEEP BALLAST.....	64
JK-10560022 ANCHOR PUSHER.....	64

**FITS PLASSER**

JK-560C CARBIDE TAMPING TOOL.....	65
JK-560L CARBIDE TAMPING TOOL.....	65
JK-560LN CARBIDE TAMPING TOOL.....	65

JK-578-4S-140 CARBIDE TAMPING TOOL.....	65
JK-575-4S CARBIDE TAMPING TOOL.....	65
JK-535N-MXC CARBIDE TAMPING TOOL.....	65
JK-515N-MXR CARBIDE TAMPING TOOL.....	65
JK-515N-MXL CARBIDE TAMPING TOOL.....	65
JK-535N-AXC CARBIDE TAMPING TOOL.....	65
JK-515N-AXR CARBIDE TAMPING TOOL.....	65
JK-515N-AXL CARBIDE TAMPING TOOL.....	66

**BALLAST REGULATOR**

JK-198845 BROOM CLAMP ASSEMBLY.....	67
JK-730MAX PLOW BLADE, 2 HOLE.....	67
JK-730MAXCT PLOW BLADE, 2 HOLE, CONCRETE.....	67
JK-740MAX PLOW BLADE, 3 HOLE.....	67
JK-740MAXCT PLOW BLADE, 3 HOLE, CONCRETE.....	67
JK-171031 PLOW BLADE, 5 HOLE.....	67
JK-750-1-7 SKID PLATE, 7-INCH, CARBIDE.....	67
JK-715 Z BAR, OUTBOARD.....	67
JK-725 Z BAR, INBOARD.....	67
JK-200602 PLOW BLADE, 2 HOLE.....	67
JK-200602CT PLOW BLADE, 2 HOLE CONCRETE.....	68
JK-164415 WHEEL, 16 INCH, KEYED.....	68

**HAND TOOLS/ABRASIVES/CONSUMABLES**

JK-NOR16X.12X1 16-INCH CUTOFF WHEEL.....	69
JK-NOR14X.12X1 14-INCH CUTOFF WHEEL.....	69
JK-NOR8X1X.62 8-INCH GRINDING WHEEL.....	69
JK-NOR8X1X.75 8-INCH GRINDING WHEEL.....	69
JK-NOR8X1X1 8-INCH GRINDING WHEEL TYPE 1 PORTABLE.....	69
JK-NOR8X2X1.38 8-INCH GRINDING WHEEL TYPE 2 CYLINDER.....	69
JK-NOR6X3X.62-11 6-INCH GRINDING WHEEL TYPE 6 PORTABLE CUP.....	69

**OTHER HARSCO MOW**

JK-765-CB 765 CONICAL UNDERCUTTER BIT.....	70
JK-642 TIE GRIPPER PAD.....	70
JK-160057 WHEEL.....	70